

How to Set-up John's Average True Range Setup

How to use Keltner Channels to create the John's 3 ATR setup

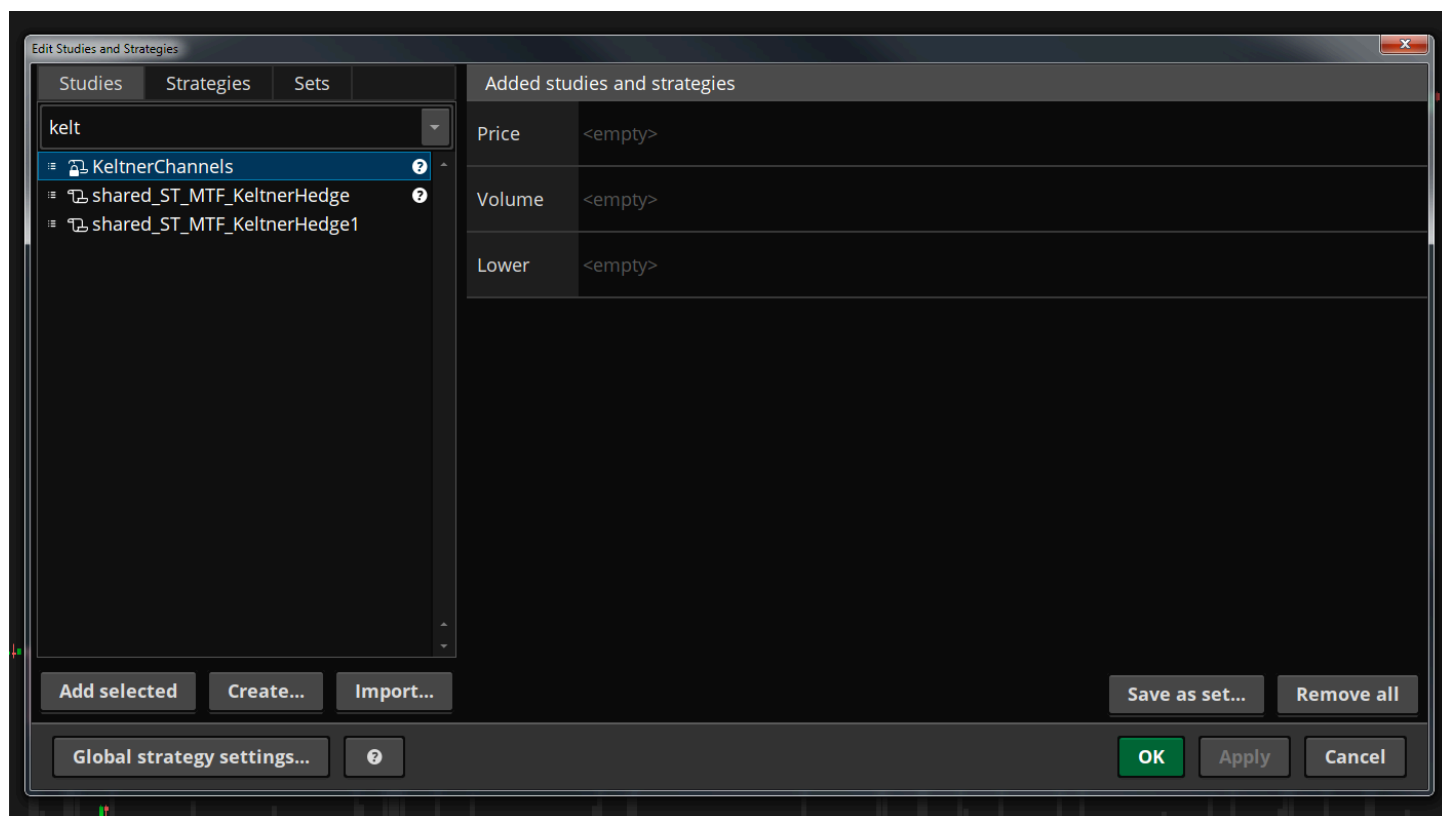
Use Keltner Channels, available with your platform, to set up the ATR channels on your chart.

[Check out this instructional video](#) on how to set-up John's 3 ATR setup.

STEP 1

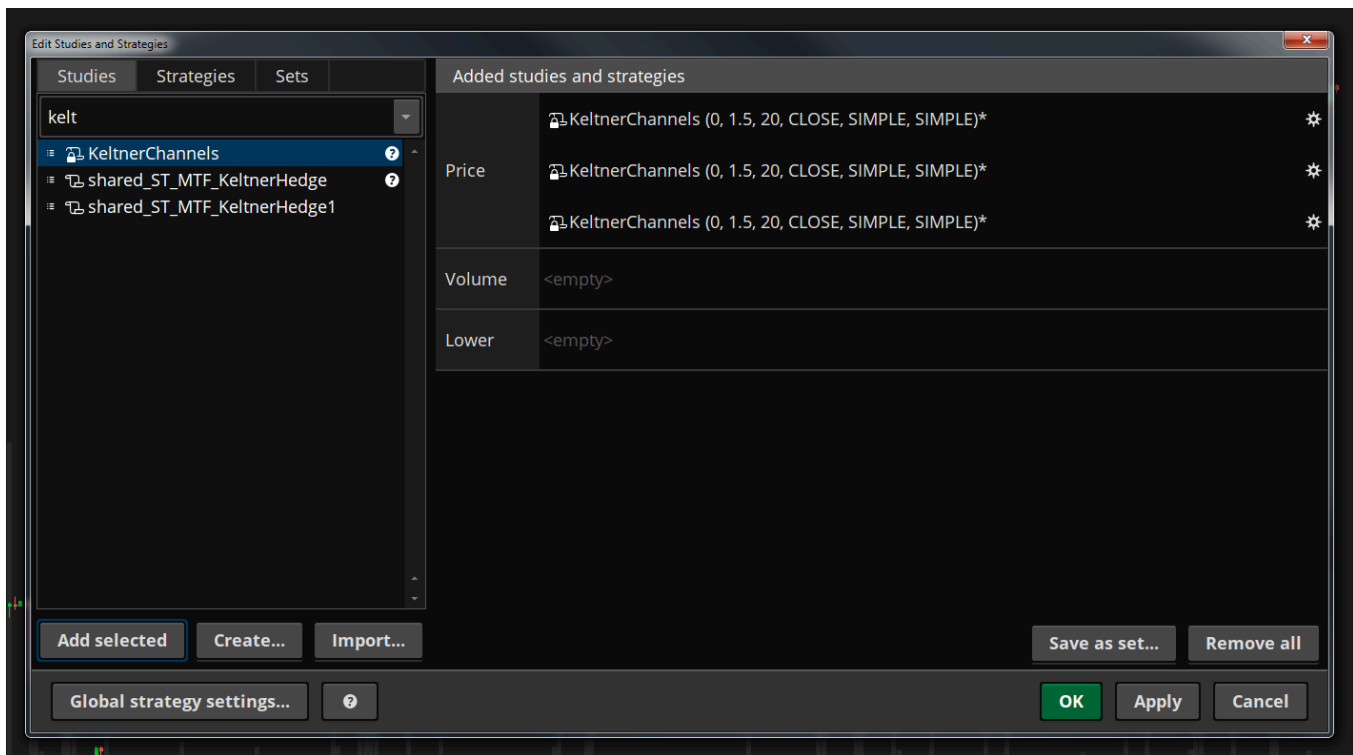
Open the Edit Studies and Strategies window.

Find Keltner Channels in the indicator list of your platform.



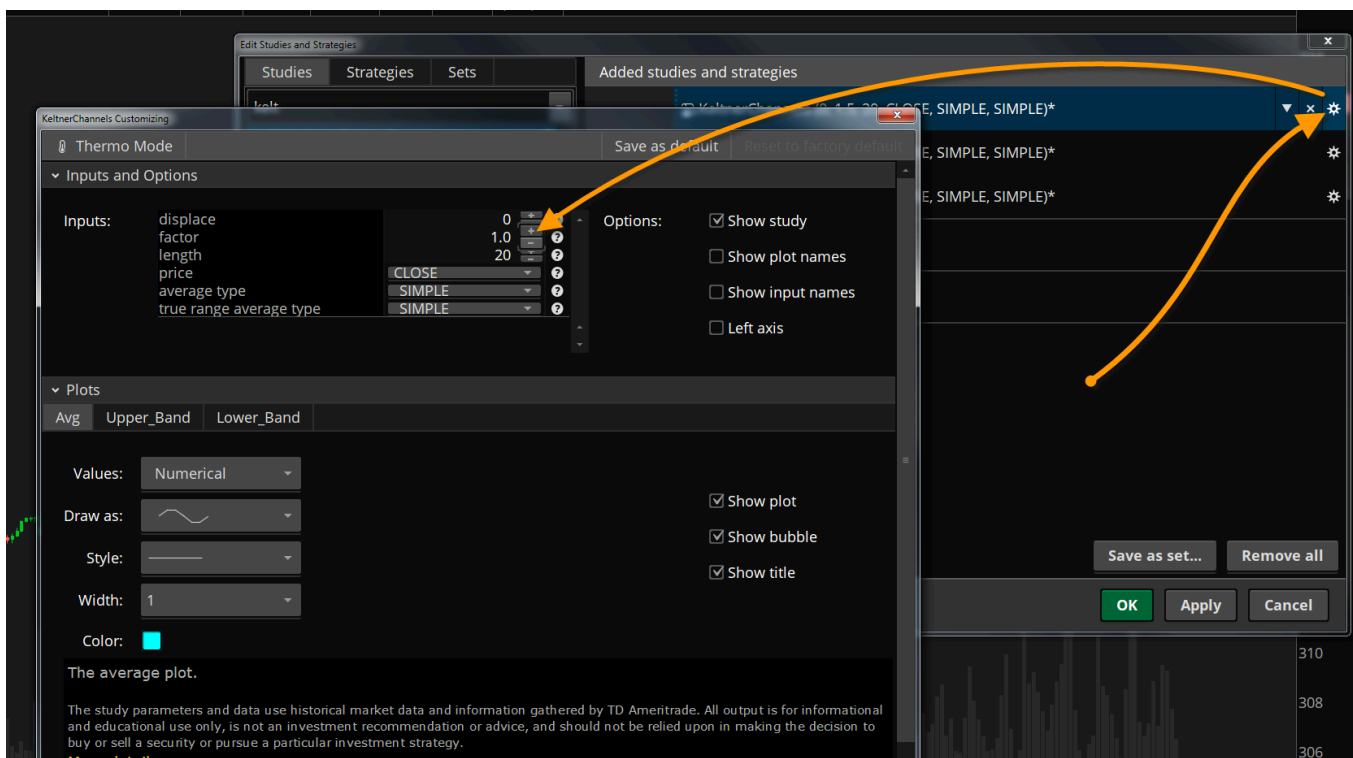
STEP 2

Add three instances of Keltner Channels to your chart.

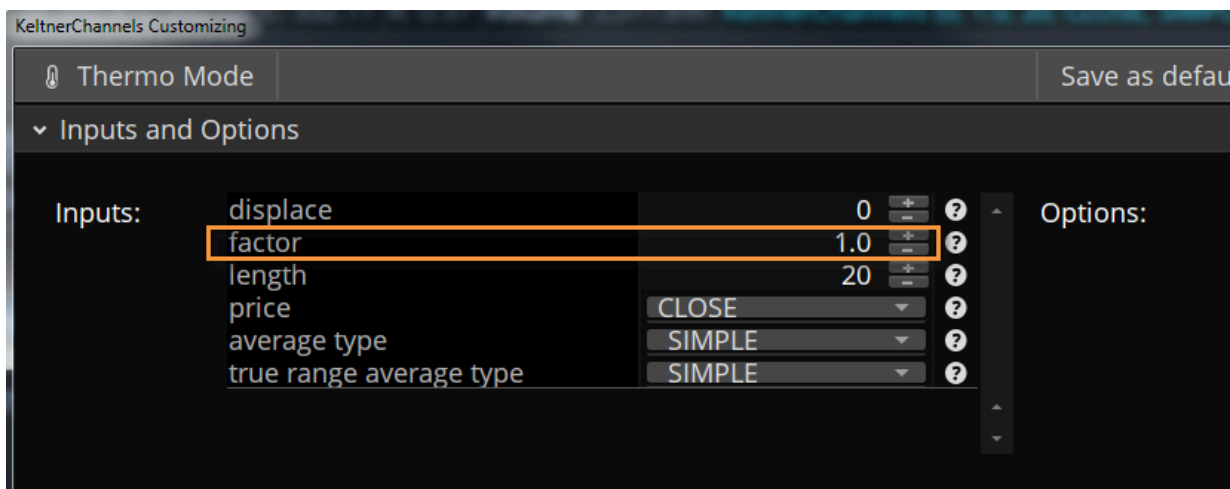


STEP 3

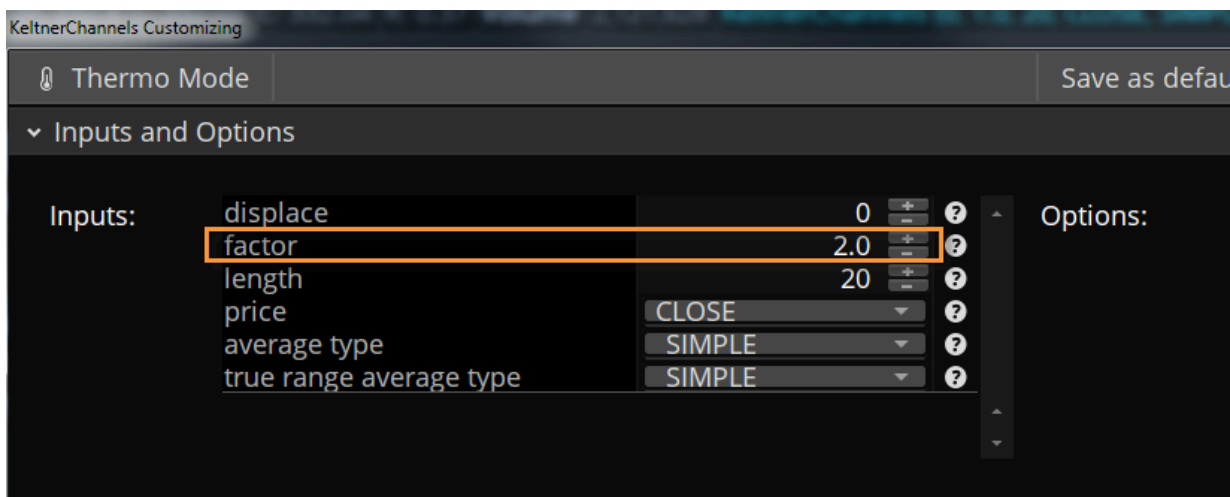
Change the settings for each instance of the Keltner Channels.



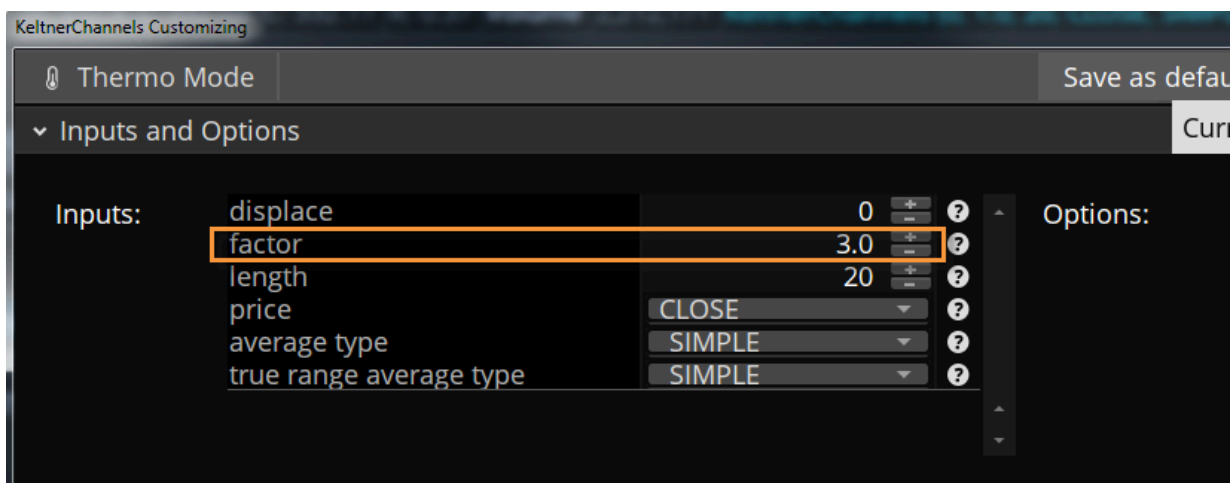
Set the first instance to a factor of 1.0



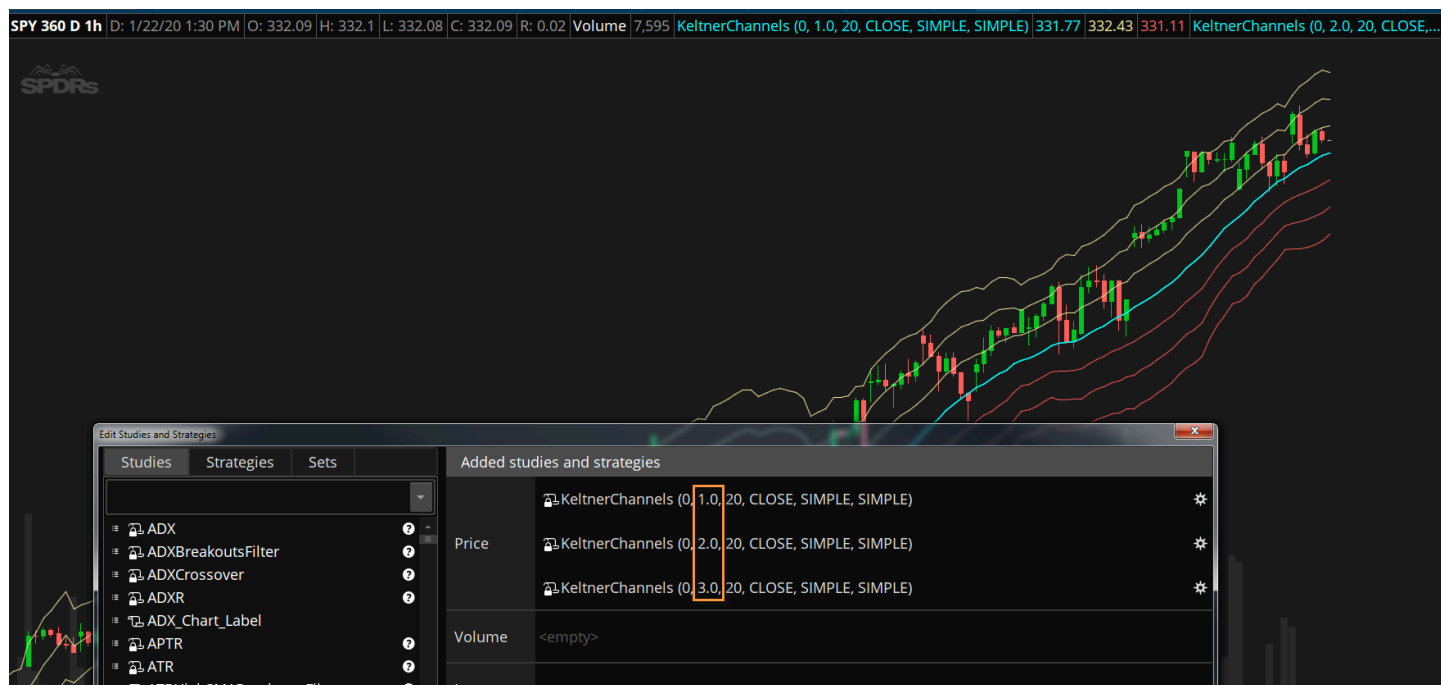
The second instance to a factor of 2.0



And the third instance to a factor of 3.0



The 1, 2 and 3 ATR channels should now be setup on your chart.



Please note, the length and range type settings may vary. For instance, John may use a length of 21 (a Fibonacci number), or use exponential instead of simple averages.

Related Links

John's Indicators and Chart Layout

<https://intercom.help/simpler-trading/en/articles/3264101>

Where can I see John Carter's trades?

<https://intercom.help/simpler-trading/en/articles/3291928>

About - ATR Move

<https://intercom.help/simpler-trading/en/articles/3578243>