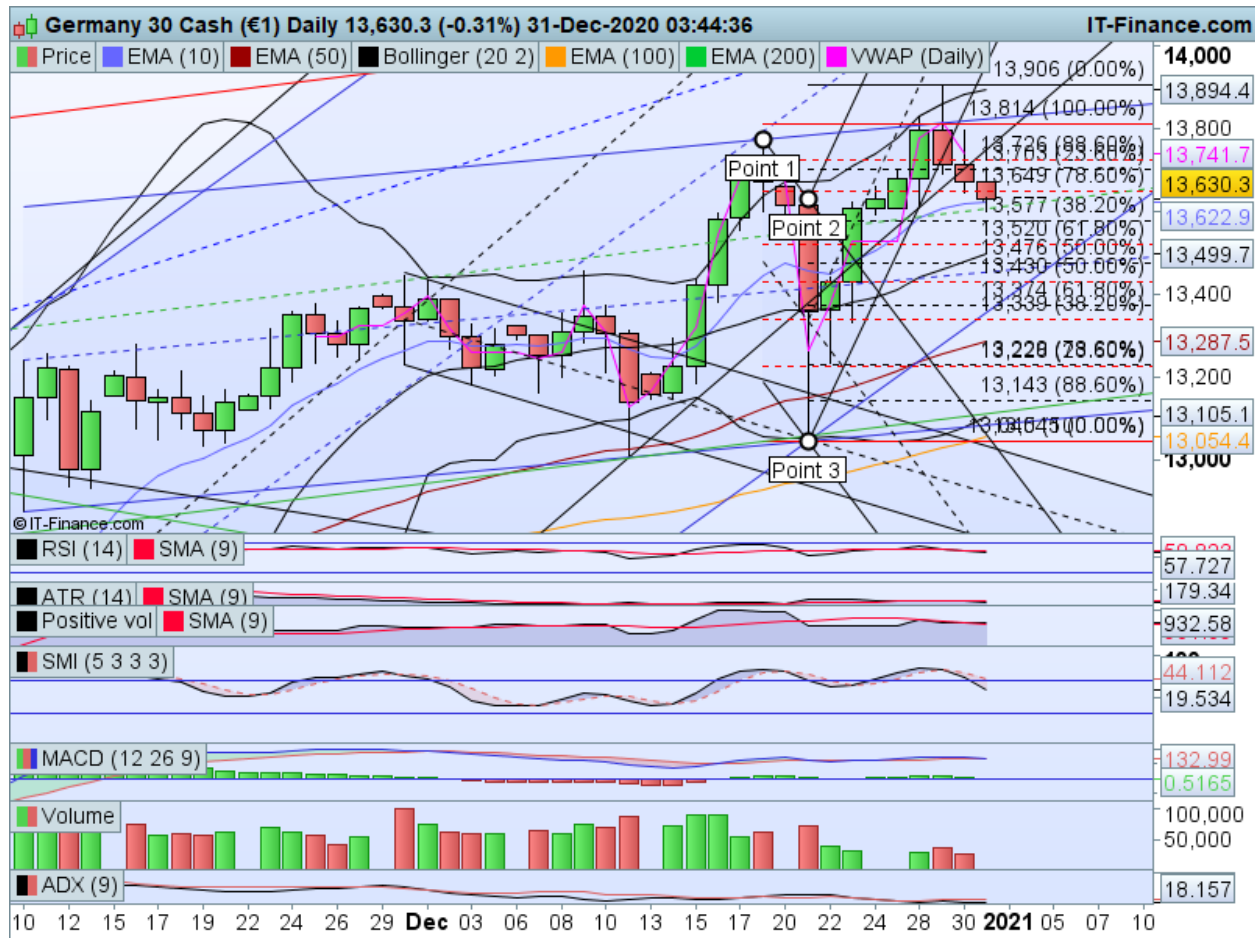


Below is the channel showing up correctly in day chart after logging in (selected channel with points 1,2 and 3 visible)



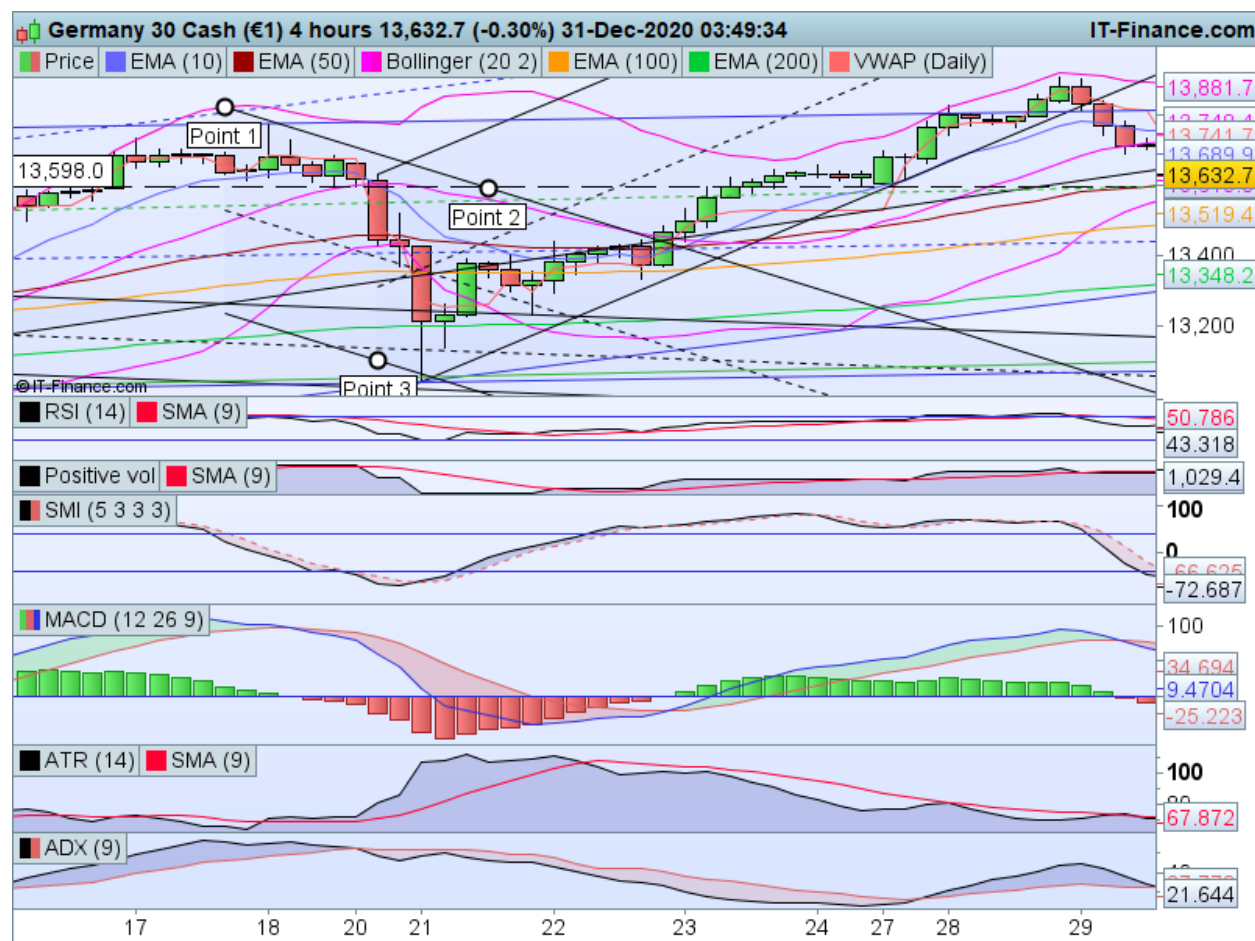
Below are points details when I select configure channel from day chart:

Point 1 details = Fri 18-Dec-2020; Value 13775.3

Point 2 details = Mon 21-Dec-2020; Value = 13632.3

Point 3 details = Mon 21-Dec-2020; Value = 13045

Below is the same channel showing up incorrectly in 4h chart after logging in (selected channel with points 1,2 and 3 visible)



Below are points details when I select configure channel from 4h chart:

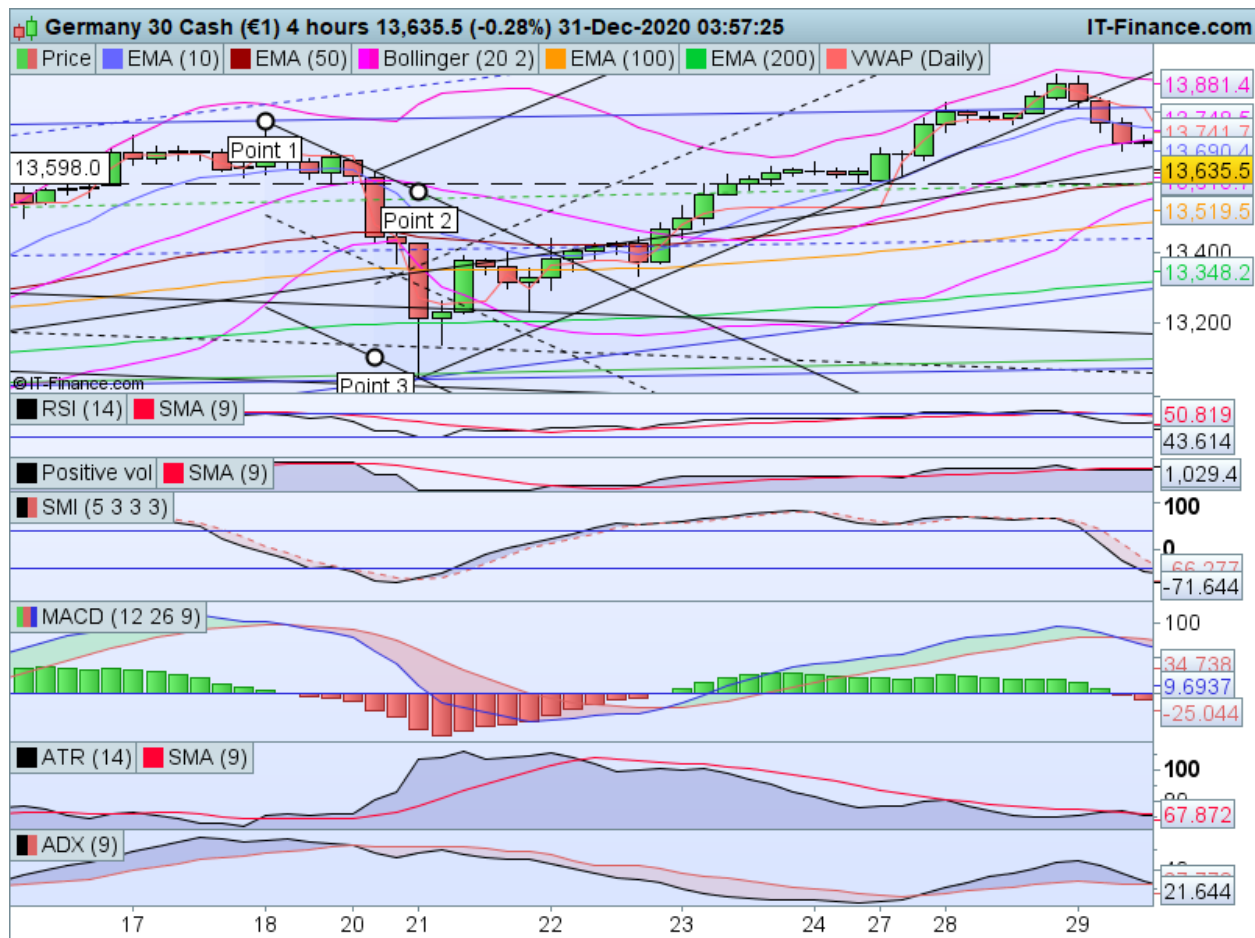
Point 1 details = Thu 17-Dec-2020 18:00; Value 13775.3

Point 2 details = Sun 20-Dec-2020 18:00; Value = 13632.3

Point 3 details = Sun 20-Dec-2020 18:00; Value = 13045

To fix this issue, I go to "configure channel", then I go to display in -> and change that from "inferior time frames" to "use platform option settings". This removes the incorrectly displaying channel from the inferior time frames. Then, I have to again change the "display in" option back to "inferior time frames" and then the channel shows up correctly in inferior time frames. After doing this process, I am printing the correctly showing channel in 4h chart below:

Below is the same channel now showing up correctly in 4h chart after doing the fix (selected channel with points 1,2 and 3 visible)



Below are points details when I select configure channel from 4h chart after fixing the issue:

Point 1 details = Thu 17-Dec-2020 18:00; Value 13775.3

Point 2 details = Sun 20-Dec-2020 18:00; Value = 13632.3

Point 3 details = Sun 20-Dec-2020 18:00; Value = 13045

So interestingly, the points details are still the same as was when the channel was displaying incorrectly! But it is evident that the channel was showing incorrectly (especially points 1 and 2 were in totally wrong place before).

As I mentioned this issue is happening with all channels and issue only happens at the time of logging in. Once issue is fixed, channels do not shift during that session even if I change units, or adjust scale manually etc. So, something goes berserk between logging out and logging in.