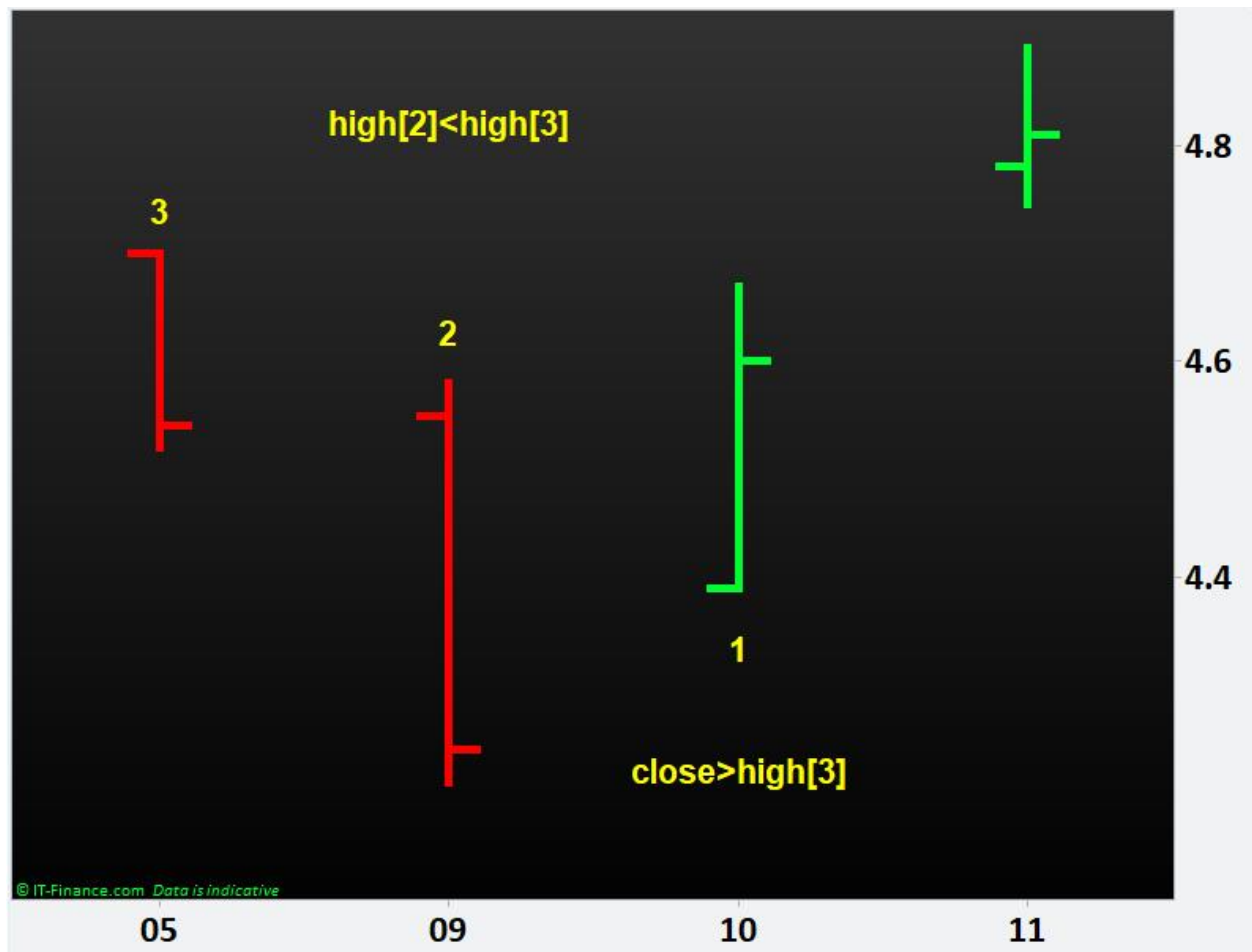


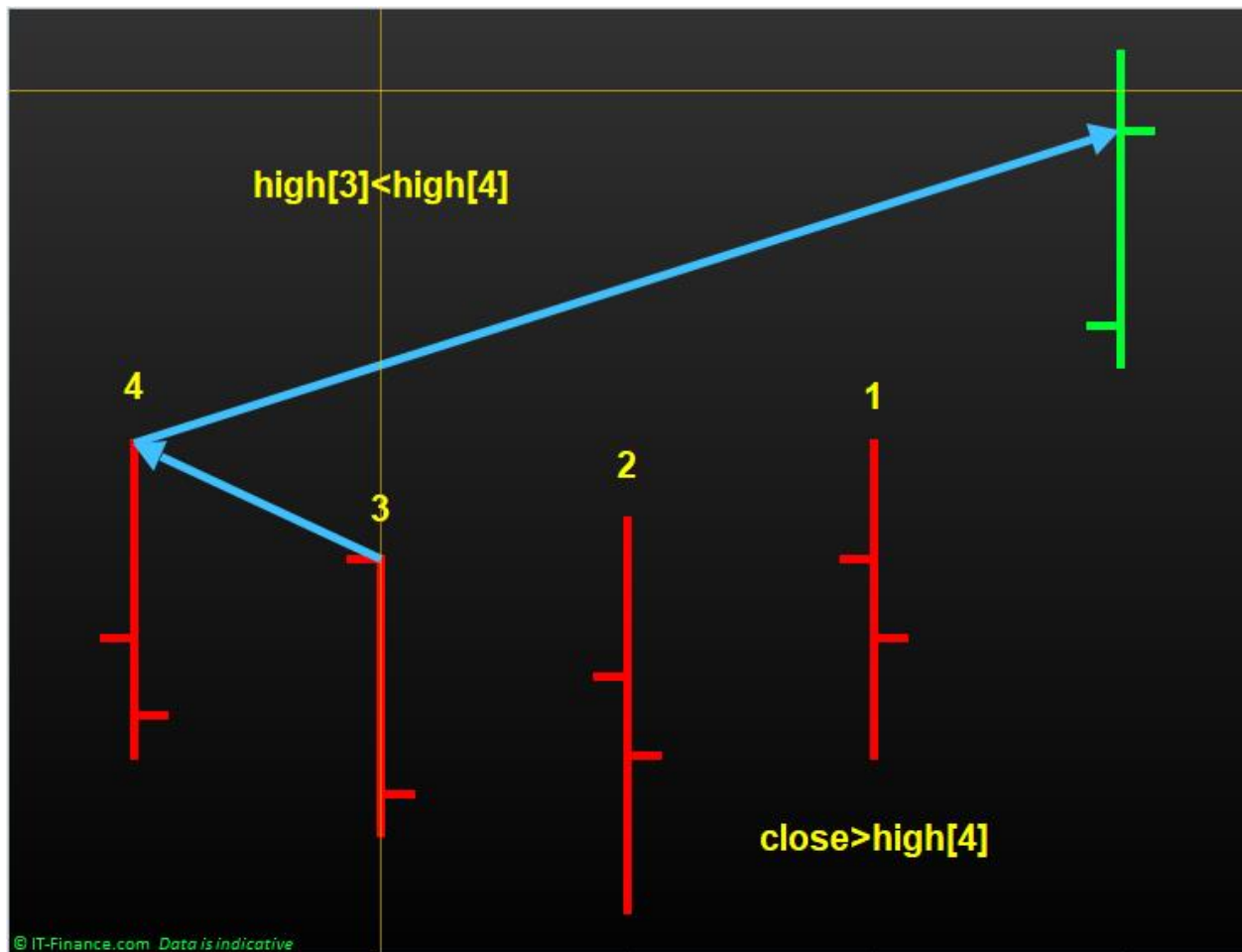
If  $h_2 < h_3$  and  $c_3 < o_3$  and  $c_2 < o_2$  and  $c_1 \leq h_3$  and  $c > h_3$  AND  $C \geq 0$  then

T=10



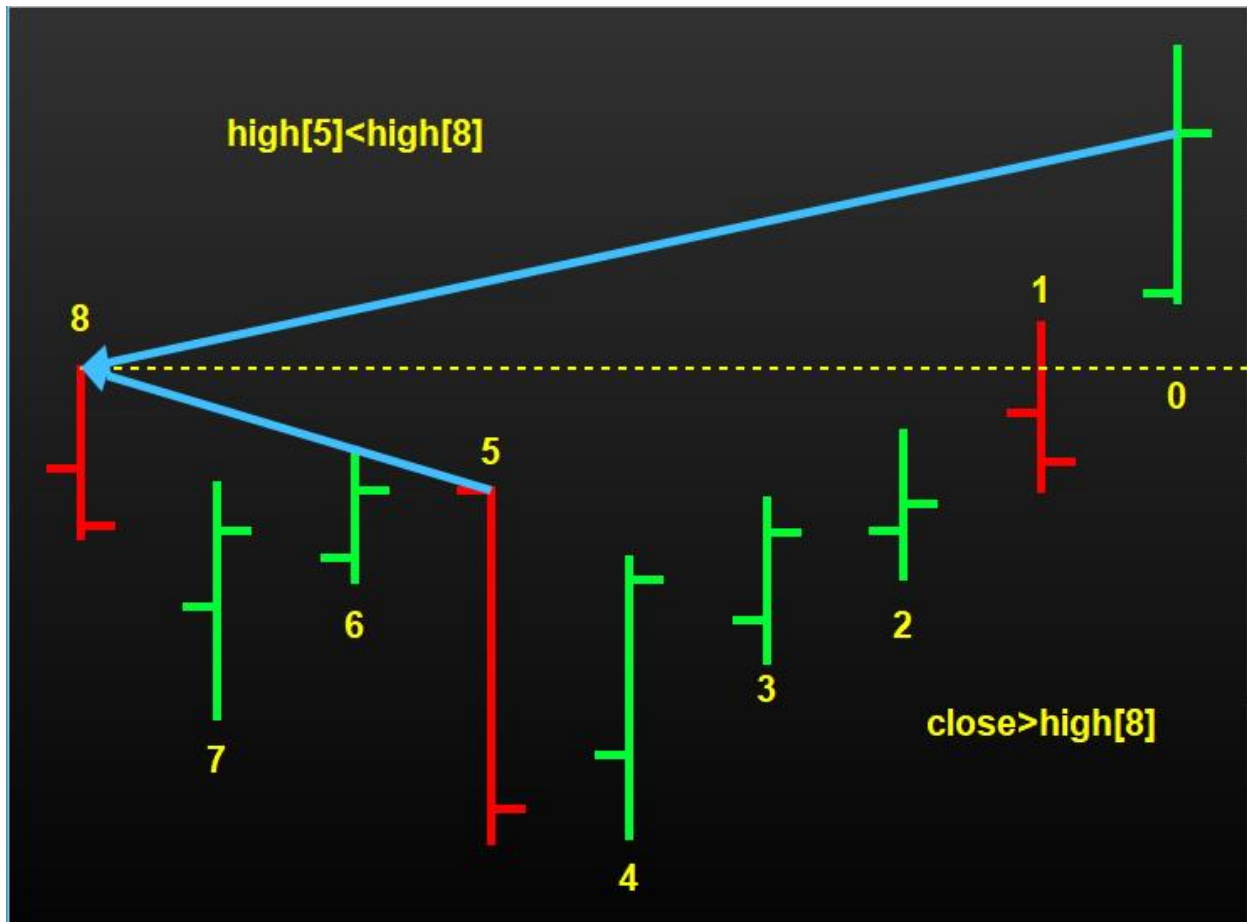
Elsif  $h_3 < h_4$  and  $c_3 < o_3$  and  $c_4 < o_4$  and  $c_2 \leq h_4$  and  $c_1 \leq h_4$  and  $c > h_4$  AND  $C \geq 0$  then

T=10



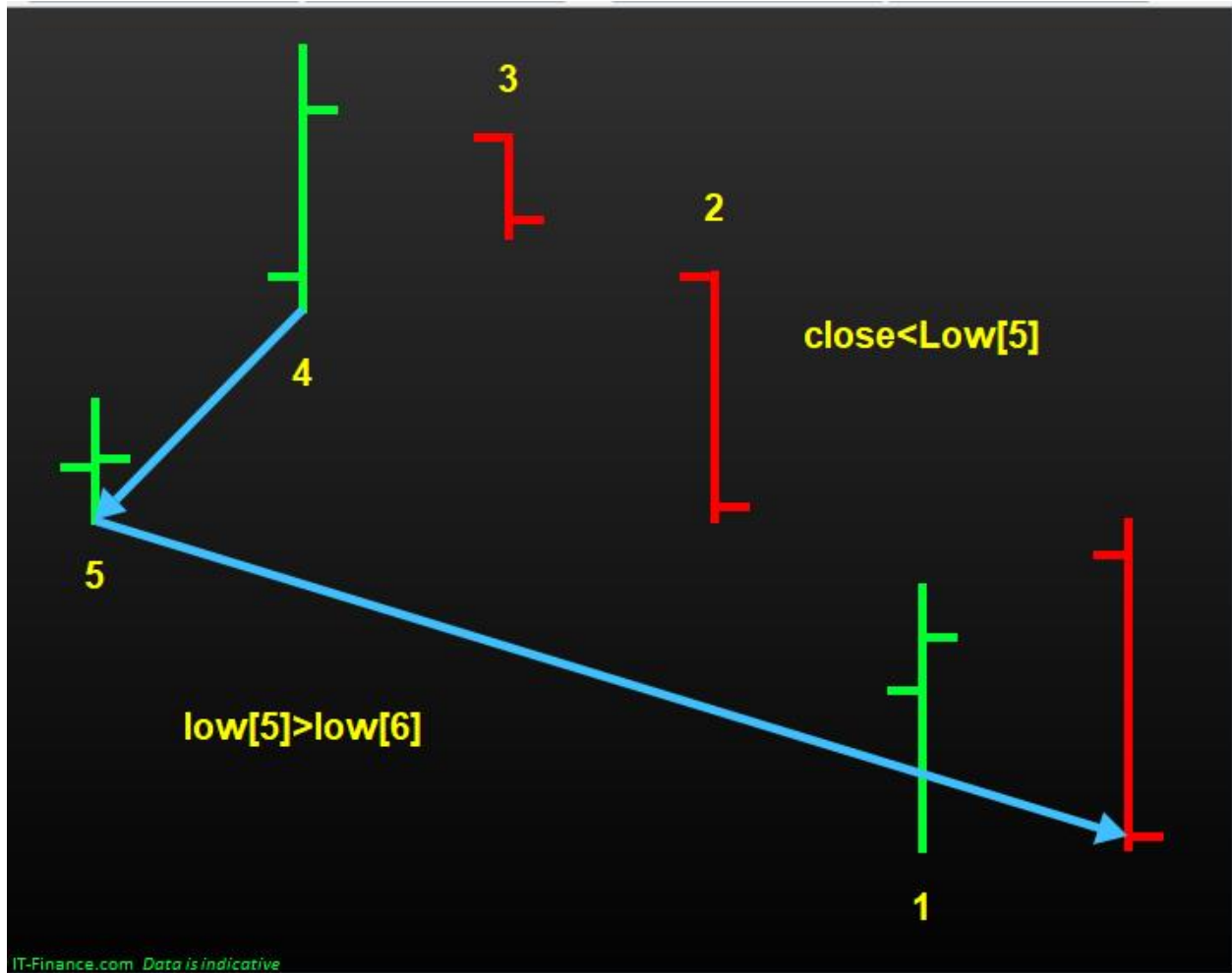
elseif  $h_5 < h_8$  and  $c_8 < o_8$  and  $c_5 < o_5$  AND  $c_4 \leq h_8$  and  $c_3 \leq h_8$  and  $c_2 \leq h_8$  and  $c_1 \leq h_8$  and  $c > h_8$  AND  $C \geq 0$   
then

t=10



Elsif  $L4 > L5$  and  $C5 \geq O5$  and  $C4 \geq O4$  and  $c3 \geq L5$  and  $c2 \geq L5$  and  $c < L5$  and  $c < 0$  then

$T = -10$



Endif

Return t as "2Bar CloseAboveBelow-HL"